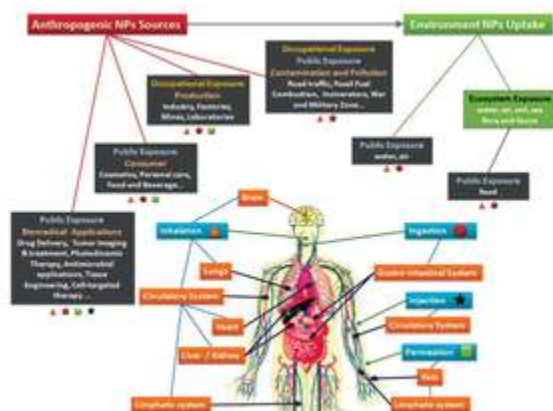


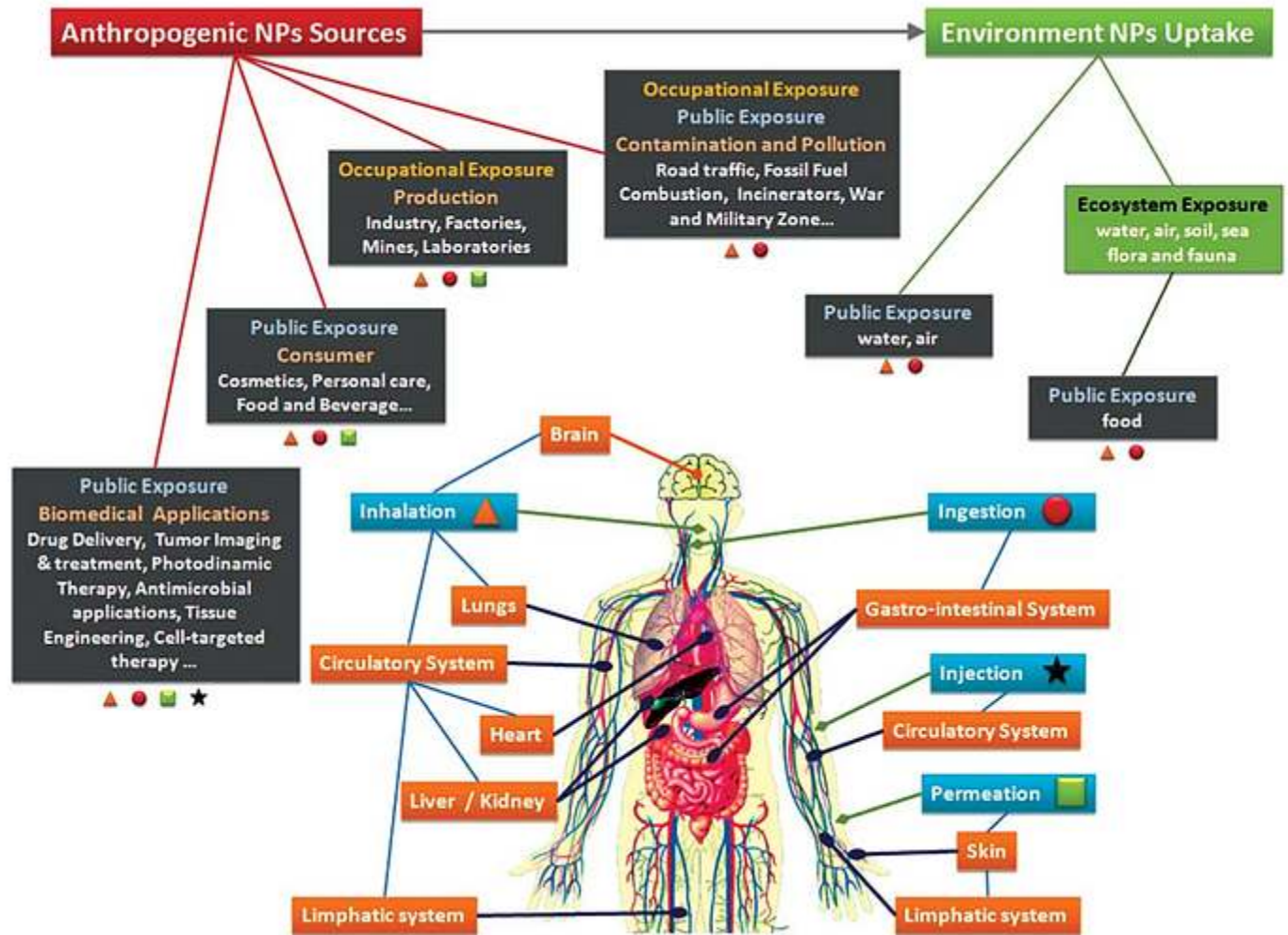
Have You Lost Your Mind?

the human body by intravenous injection or by oral, dermal, and pulmonic routes. Upon contact with physiological environments, biomolecules immediately absorb onto the NPs, forming the biomolecule-corona. Upon contact with other (micro)environments, the corona composition most likely changes, but still keeps a stable “fingerprint” from its initial entry site.[1]

Did YOU Know?

Children and infants are susceptible to harm from inhaling pollutants such as particulate matter (PM) of less than 10 micron (MPM) to 1 nano micron (NPM) because they inhale more air per pound of body weight than do adults - they breathe faster, spend more time outdoors and have smaller body sizes. In addition, children's immature immune systems may cause them to be more susceptible to PM than healthy adults.





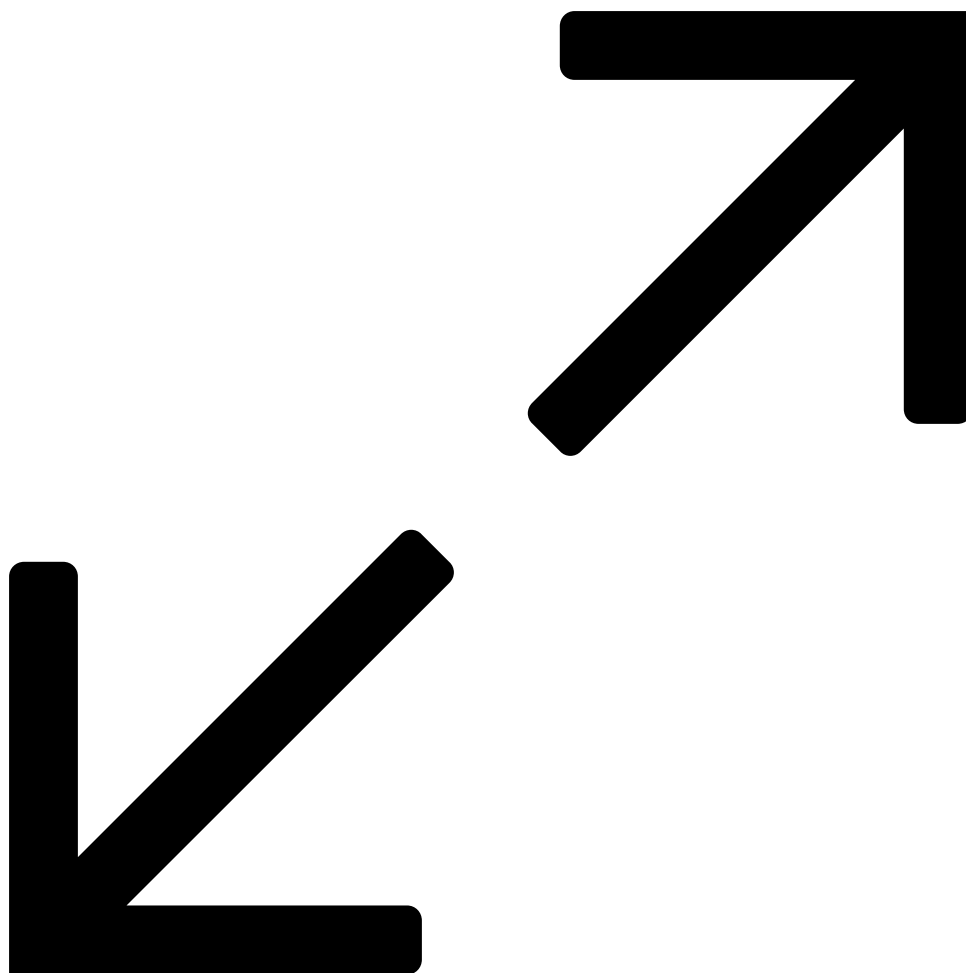
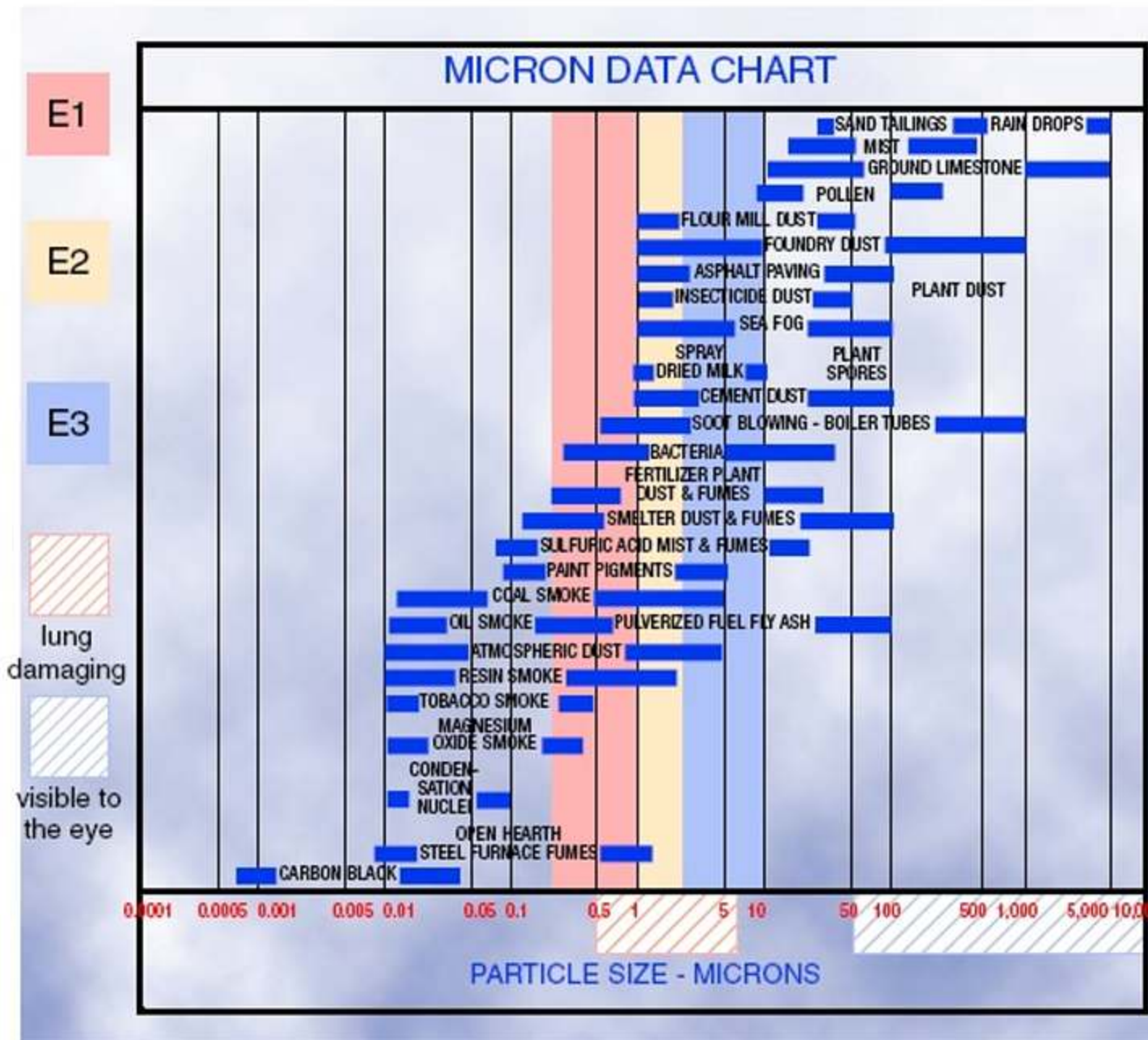


Figure 1: Possible entry routes for NPs. After accidental exposure or intended NP application, NPs enter the human body by intravenous injection or by oral, dermal, and pulmonic routes. Upon contact with physiological environments, biomolecules immediately absorb onto the NPs, forming the biomolecule-corona. Upon contact with other (micro)environments, the corona composition most likely changes, but still keeps a stable “fingerprint” from its initial entry site.[1]

Ask YOURSELF The Following Questions?

- 1) Does the so-called infectious virus have morals and refuses to attack children, infants and toddlers?
- 2) Why does the so-called infectious virus bypass the young? If the virus is the prey of life then why are



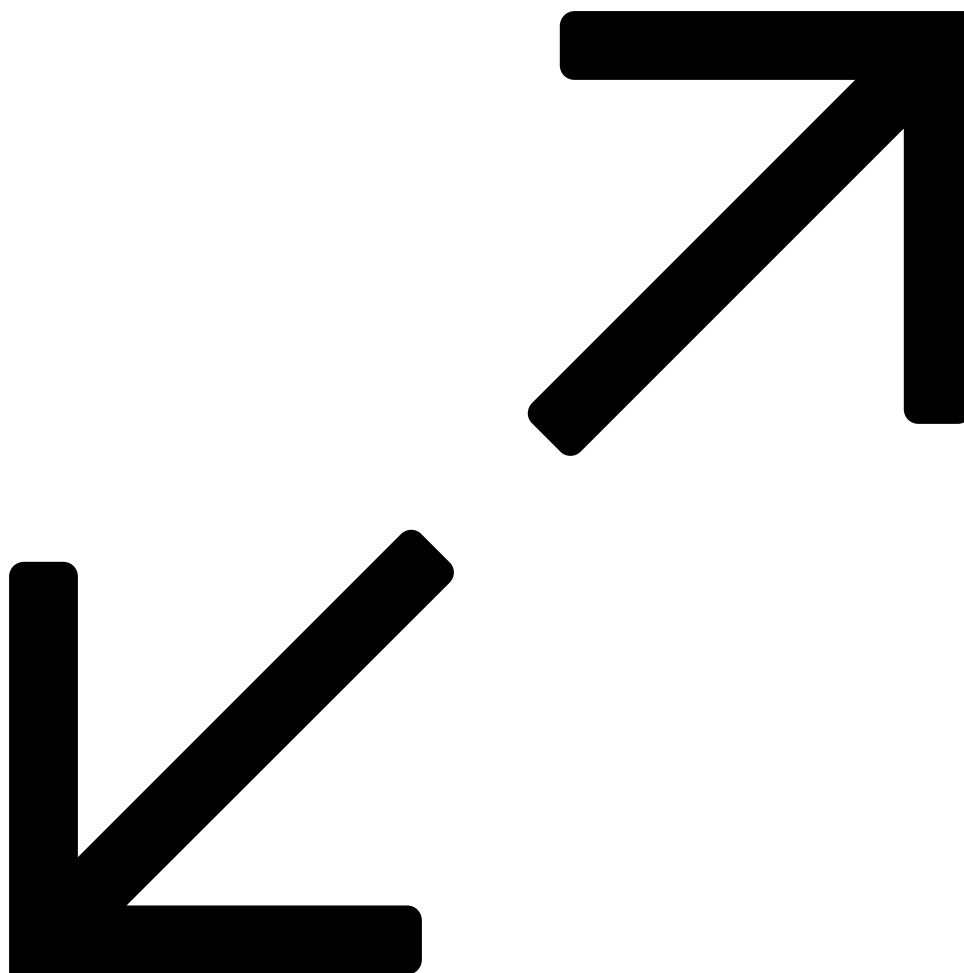


Figure 2: Particulate Matter Sizes in Microns. One micron is equal to 1/25,000th of an inch.

Material	Mean aggregate size (µm)	Mean particle size (nm)	RCI (at 5 µg/ml)	RCI (at 10 µg/ml)
Ag	1	30	1.5	0.8
Ag	0.4	30	1.8	0.1
Al ₂ O ₃	0.7	50	0.7	0.4
Fe ₂ O ₃	0.7	50	0.9	0.1
ZrO ₂	0.7	20	0.7	0.6
TiO ₂ (rutile)	1	short fibers 5-15 nm diam.	0.3	0.05
TiO ₂ (anatase)	2.5	20 nm	0.4	0.1
Si ₃ N ₄	1	60	0.4	0.06
Asbestos Chrysotile	7	Fibers 20 nm diam., up to 500 aspect ratio	1	1
Carbon black	0.5	20	0.8	0.6
SWCNT	10	100 nm diam.	1.1	0.9
MWCNT	2	15 nm diam.	0.9	0.8

Material	Mean aggregate size (μm)	Mean particle size (nm)	RCI (at 5 $\mu\text{g/ml}$)	RCI (at 10 $\mu\text{g/ml}$)
Ag	1	30	1.5	0.8
Ag	0.4	30	1.8	0.1
Al_2O_3	0.7	50	0.7	0.4
Fe_2O_3	0.7	50	0.9	0.1
ZrO_2	0.7	20	0.7	0.6
TiO_2 (rutile)	1	short fibers 5-15 nm diam.	0.3	0.05
TiO_2 (anatase)	2.5	20 nm	0.4	0.1
Si_3N_4	1	60	0.4	0.06
Asbestos Chrysotile	7	Fibers 20 nm diam., up to 500 aspect ratio	1	1
Carbon black	0.5	20	0.8	0.6
SWCNT	10	100 nm diam.	1.1	0.9
MWCNT	2	15 nm diam.	0.9	0.8

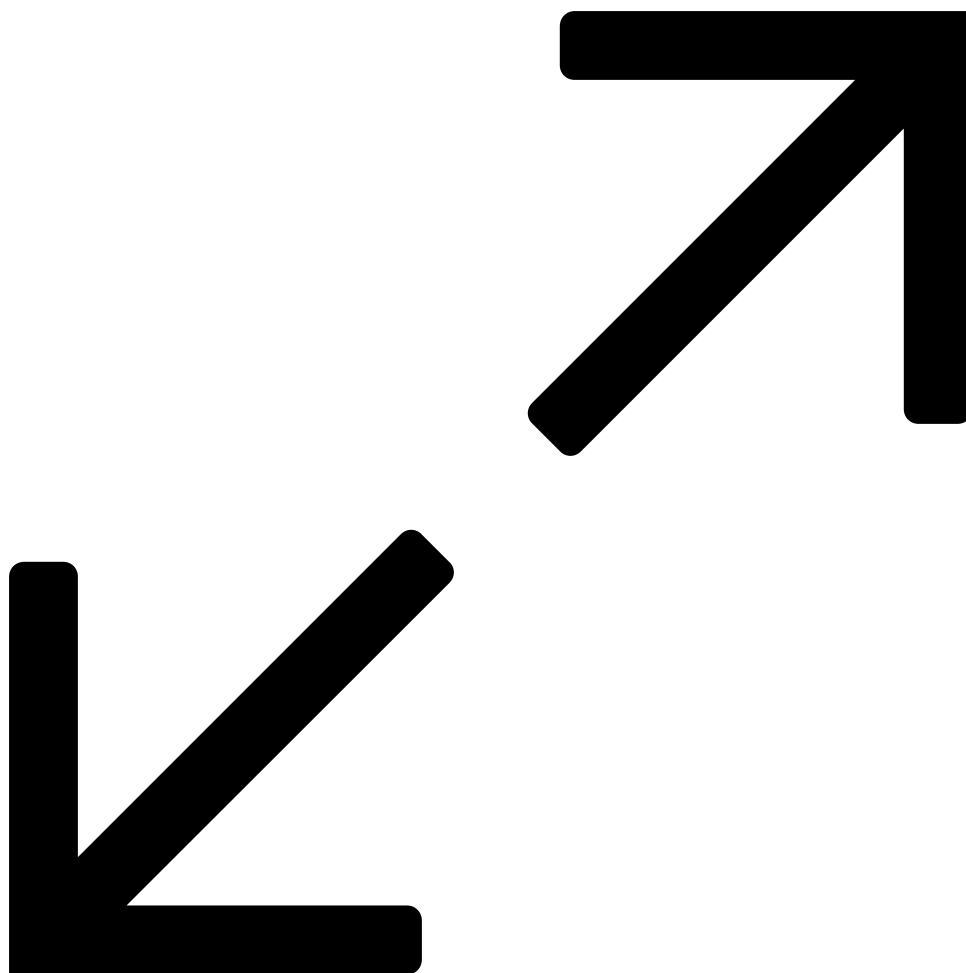


Figure 3: Micro and Nano micron sizes of toxic acidic PM that can cause serious sickness and disease.

A Few More Questions!

- 4) Have YOU seen people getting out of their cars and putting on their masks, as well as getting into their cars and then taking off their masks?
- 5) Does the so-called infectious virus have morals, with a common courtesy of not entering someone's private property?
- 6) Does the so-called virus fear being arrested for entering your car, home or office without your permission?

So Why Are Viruses So Selective?

7) Why does the so-called virus prey on those with pre-existing conditions such as cancer, diabetes and heart disease patients?

Particle	Use/exposure	Carcinogenic effect	
		Rat	Human
Particulate matter (PM _{0.1} , PM _{2.5} , PM ₁₀)	Ambient		Possibly carcinogenic? (unknown fraction)
NiO	Exhaust	+	Carcinogenic
Quartz (crystalline silica)	Constructions	+	Carcinogenic
Asbestos	Insulation, mining	+	Carcinogenic
Carbon black	Pigments, toner, tires	+	Possibly carcinogenic
Refractory ceramic fibers	insulation	+	Possibly carcinogenic
Wood dust	Furniture making, saw mills	+/-	Carcinogenic (some types)
TiO ₂	Pigments, sunscreens	+	
Diesel exhaust	Engines, cars	+	
Talc	Cosmetics, mining	+	
Volcanic fly ash	Ambient	+	
Coal mine dust	Mining	+	Not classifiable
Rockwool	Insulation	+	Not classifiable
Iron oxides	Pigments, paramagnetic diagnostics	+/-	
Graphite	Occupational	+/-	
Cement	Constructions, buildings	-	Not classifiable
Amorphous silica	Cleaning, paints, drugs	-	Not classifiable

Particle	Use/exposure	Carcinogenic effect	
		Rat	Human
Particulate matter (PM _{0.1} , PM _{2.5} , PM ₁₀)	Ambient		Possibly carcinogenic? (unknown fraction)
NiO	Exhaust	+	Carcinogenic
Quartz (crystalline silica)	Constructions	+	Carcinogenic
Asbestos	Insulation, mining	+	Carcinogenic
Carbon black	Pigments, toner, tires	+	Possibly carcinogenic
Refractory ceramic fibers	insulation	+	Possibly carcinogenic
Wood dust	Furniture making, saw mills	+/-	Carcinogenic (some types)
TiO ₂	Pigments, sunscreens	+	
Diesel exhaust	Engines, cars	+	
Talc	Cosmetics, mining	+	
Volcanic fly ash	Ambient	+	
Coal mine dust	Mining	+	Not classifiable
Rockwool	Insulation	+	Not classifiable
Iron oxides	Pigments, paramagnetic diagnostics	+/-	
Graphite	Occupational	+/-	
Cement	Constructions, buildings	-	Not classifiable
Amorphous silica	Cleaning, paints, drugs	-	Not classifiable

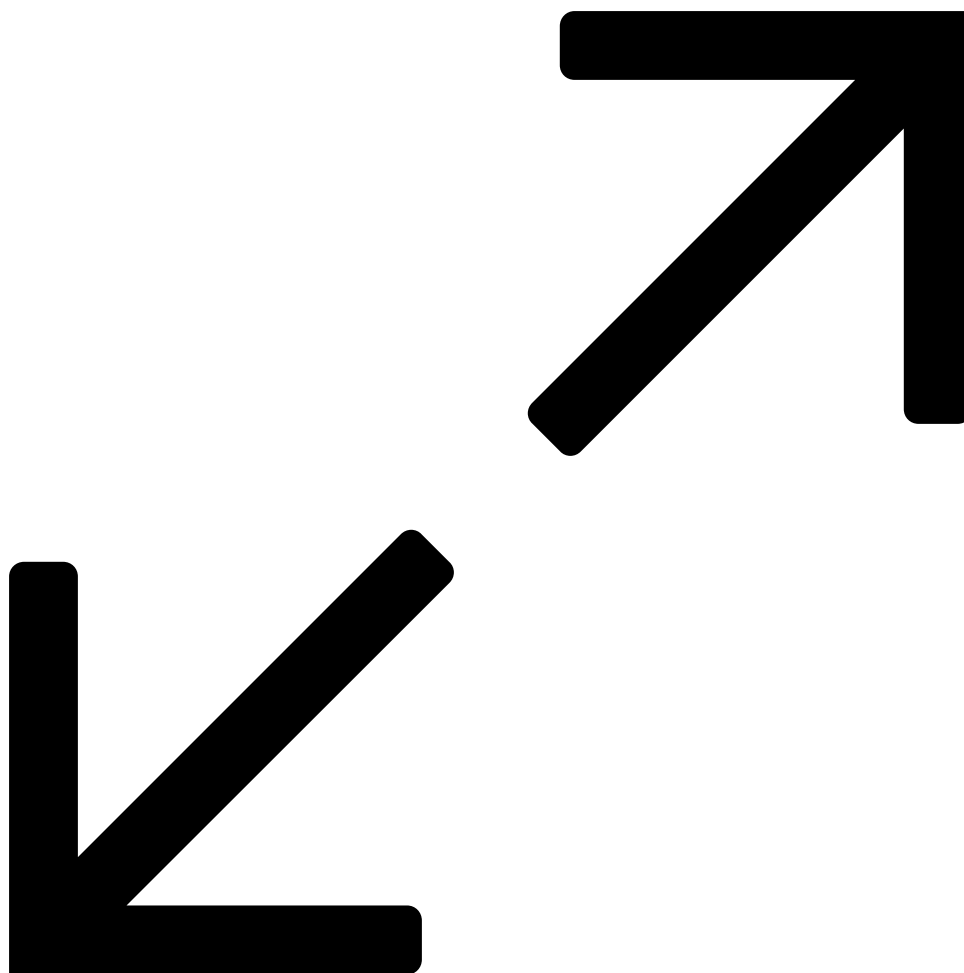


Figure 4: Particles with proven lung carcinogenic effects in animals and/or humans (most of the classifications are also classified by the International Agency for Research on Cancer, IARC)

What is the Real Virus?

Answer: Ignorance

What is the Real Disease?

Answer: The loss of common sense

What is the Real Treatment:

I have suggested for over 4 decades that there is only one sickness, one disease and one treatment. The one sickness and one disease is the over-acidification of the vascular and interstitial fluids due to an inverted way of living, eating, drinking, breathing, thinking, feeling and believing. The one treatment is to restore the alkaline design of the vascular, interstitial and intracellular fluids with an alkaline lifestyle and diet!



terrain est tout." (The microbe is nothing, the terrain is everything) — The last words of Louis Pasteur (Father of the "Germ Theory" of disease)

"Treat the patient, not the infection."

Germ Cause Disease

or

Dis-ease is from a Weakened Immune System



GERM THEORY

TERRAIN THEORY

VACCINATE THE FISH

CLEAN THE TANK

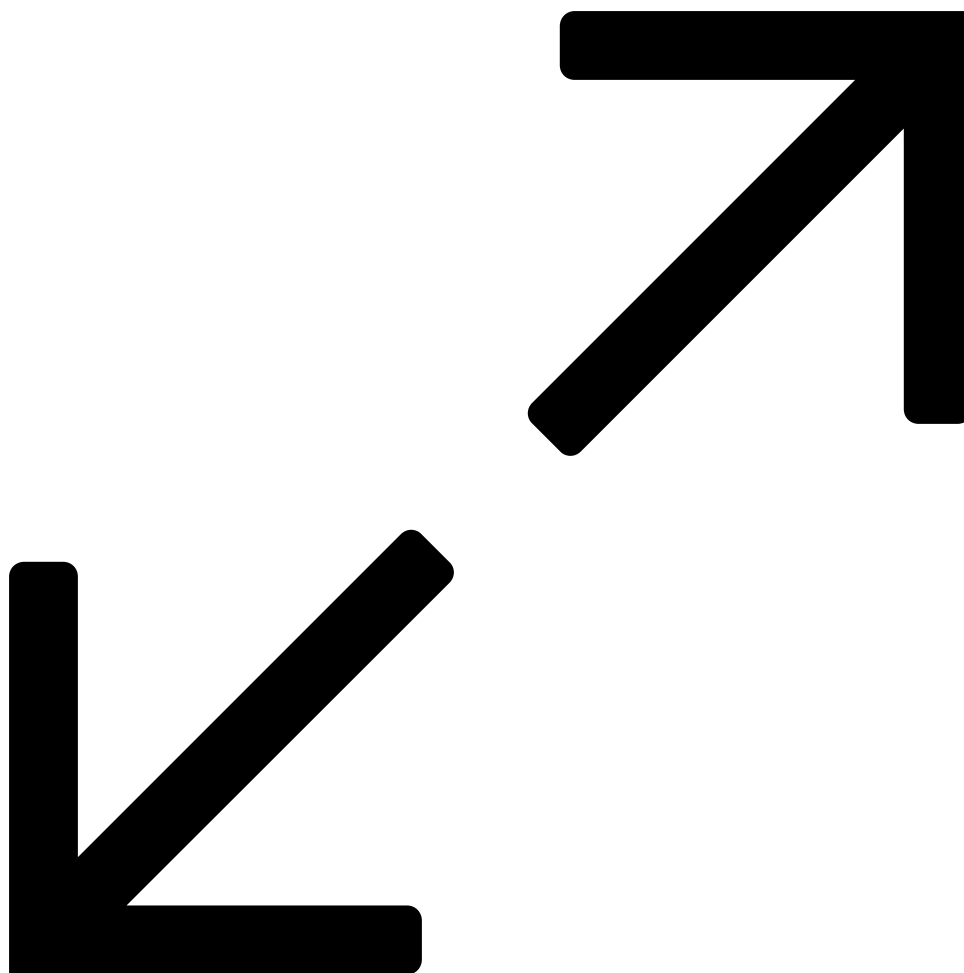


Figure 5: Comparison of the germ and terrain theory

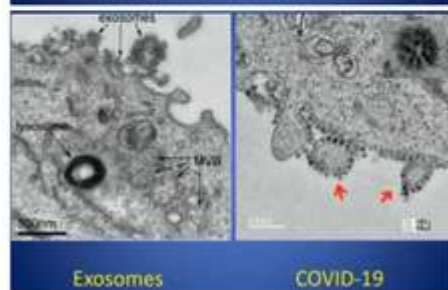
To learn more about particulate matter (PM) and the dis-eases they cause check out the following charts and read the following articles at these links:

1. <https://www.drrobertyoung.com/post/what-is-pm-and-how-does-it-get-into-the-air>
2. <https://www.drrobertyoung.com/post/singapore-s-corona-effect-covid-19-case-fatality-rate-is-remarkably-low-why>
3. <https://www.drrobertyoung.com/post/understanding-colloids-nano-colloidal-systems-in-health-nutrition>

4. <https://www.drrobertyoung.com/post/air-pollution-poisoning-at-ground-zero-wuhan-china>

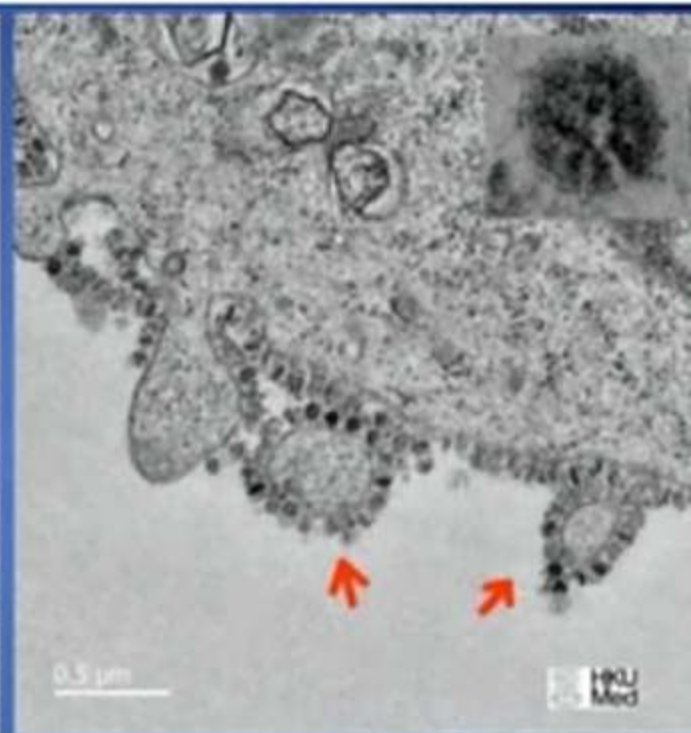
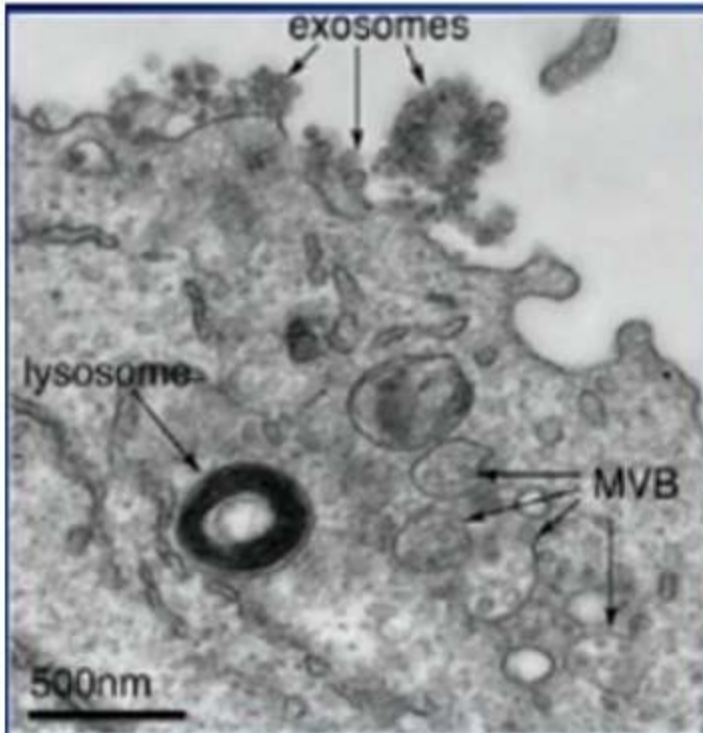
5. <https://www.drrobertyoung.com/post/lies-and-viruses-have-a-lot-in-common>

	Exosomes	COVID-19
Diameter inside cell	500 nm (MVE)	500 nm
Diameter outside cell	100 nm	100 nm
Receptor	ACE-2	ACE-2
Contains	RNA	RNA
Found in	Bronchoalveolar (lung) fluid	Bronchoalveolar (lung) fluid



Endogenously Created Exosomes Protect the Cells

	Exosomes	COVID-19
Diameter inside cell	500 nm (MVE)	500 nm
Diameter outside cell	100 nm	100 nm
Receptor	ACE-2	ACE-2
Contains	RNA	RNA
Found in	Bronchoalveolar (lung) fluid	Bronchoalveolar (lung) fluid



Exosomes **COVID-19**

Endogenously Created Exosomes Protect the Cells

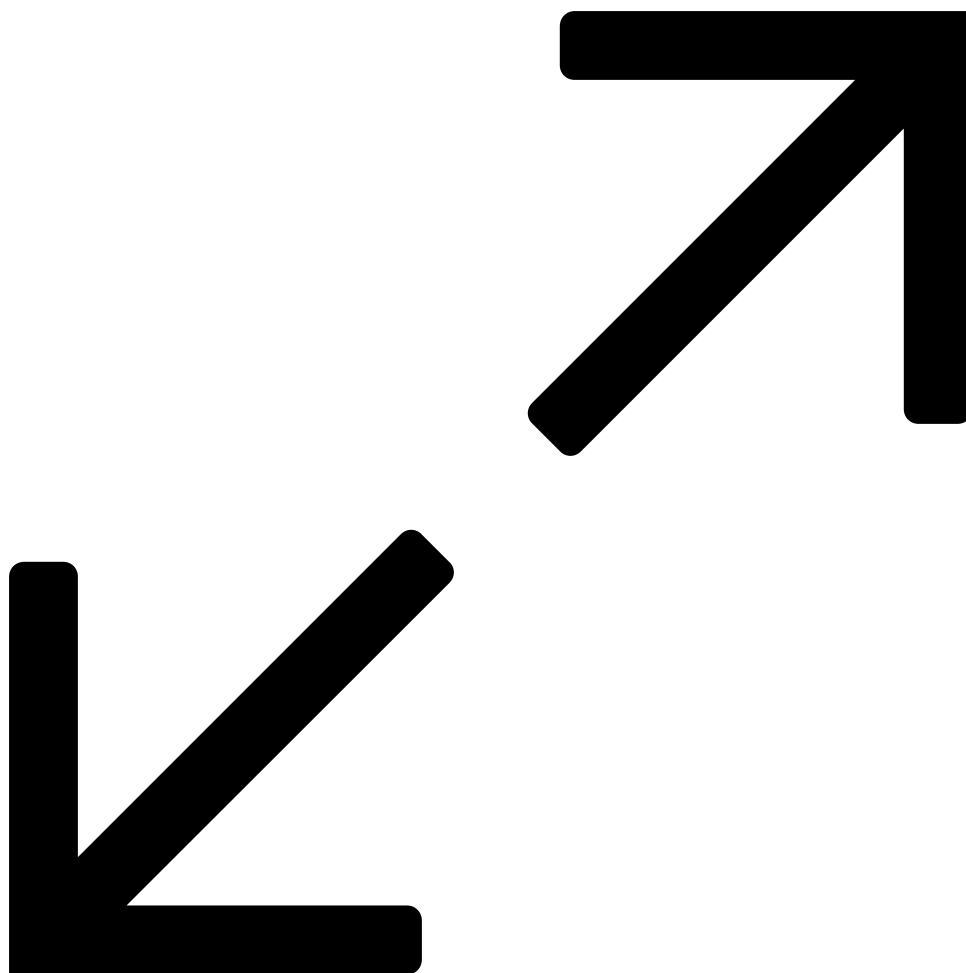
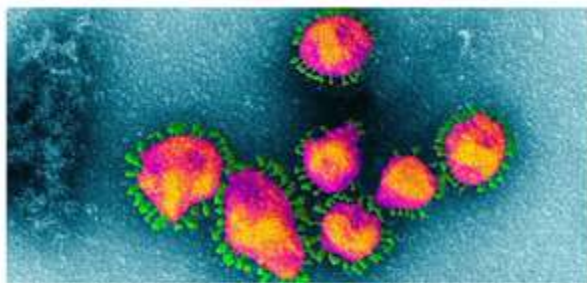


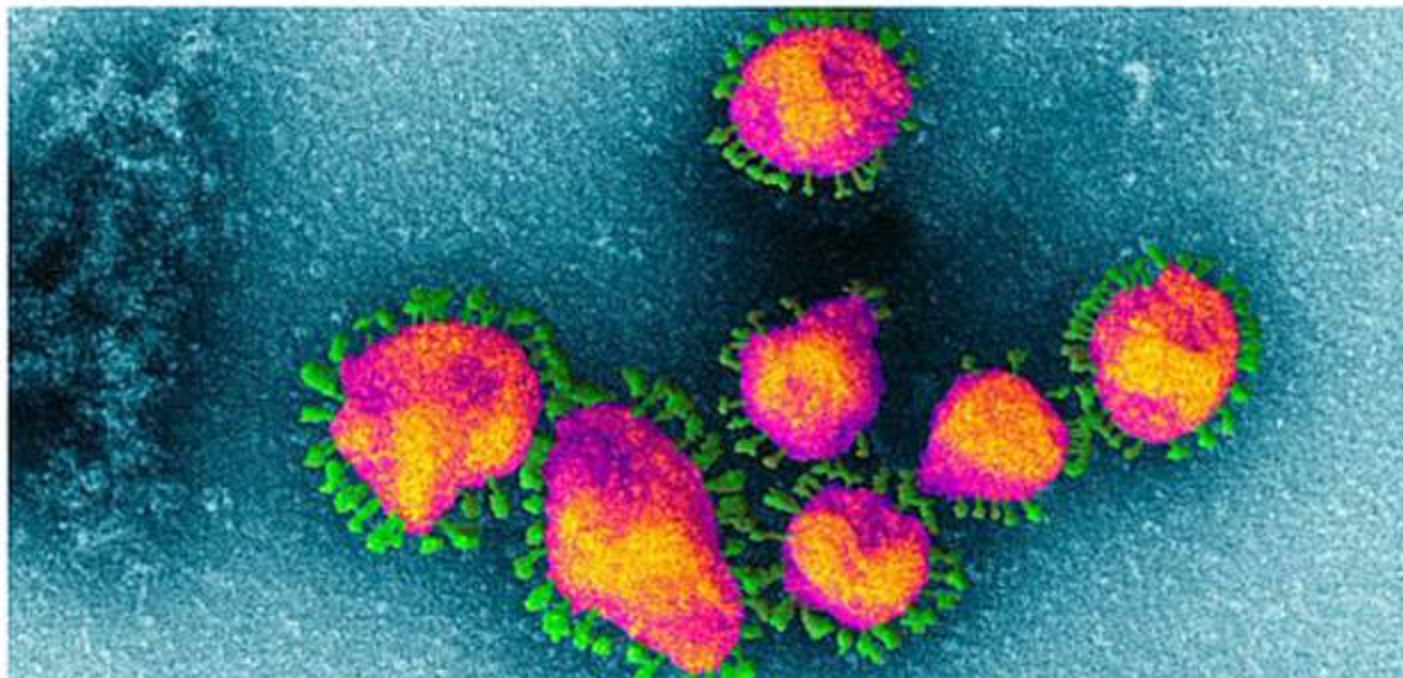
Figure 6: Exosomes and COVID-19 are anatomically identical.[2]

6. <https://www.drrobertyoung.com/post/it-is-raining-acid-on-your-lungs>

7. <https://www.drrobertyoung.com/post/dismantling-the-viral-theory>



A Micrograph of an aggregation of infected red blood cells with the phantom Coronavirus. These so-called infected cells are nothing more than biological transforming red blood cells that are going through pleomorphic changes due to increased acidity and a declining pH - <7.2. The biological transformation of blood or body cells is a natural process that takes place in an acidic environment of the interstitial fluids of the Interstitium compartments and then spilling over into the blood plasma via hydrostatic pressure caused by the buildup of dietary and metabolic acidic waste which has not been properly eliminated by the lymphatic system via the four channels of elimination - urination, defecation, perspiration and/or respiration.. <https://www.drrobertyoung.com/post/dismantling-the-viral-theory>



A Micrograph of an aggregation of infected red blood cells with the phantom Coronavirus. These so-called infected cells are nothing more than biological transforming red blood cells that are going through pleomorphic changes due to increased acidity and a declining pH - <7.2. The biological transformation of blood or body cells is a natural process that takes place in an acidic environment of the interstitial fluids of the Interstitium compartments and then spilling over into the blood plasma via hydrostatic pressure caused by the buildup of dietary and metabolic acidic waste which has not been properly eliminated by the lymphatic system via the four channels of elimination - urination, defecation, perspiration and/or respiration.. <https://www.drrobertyoung.com/post/dismantling-the-viral-theory>

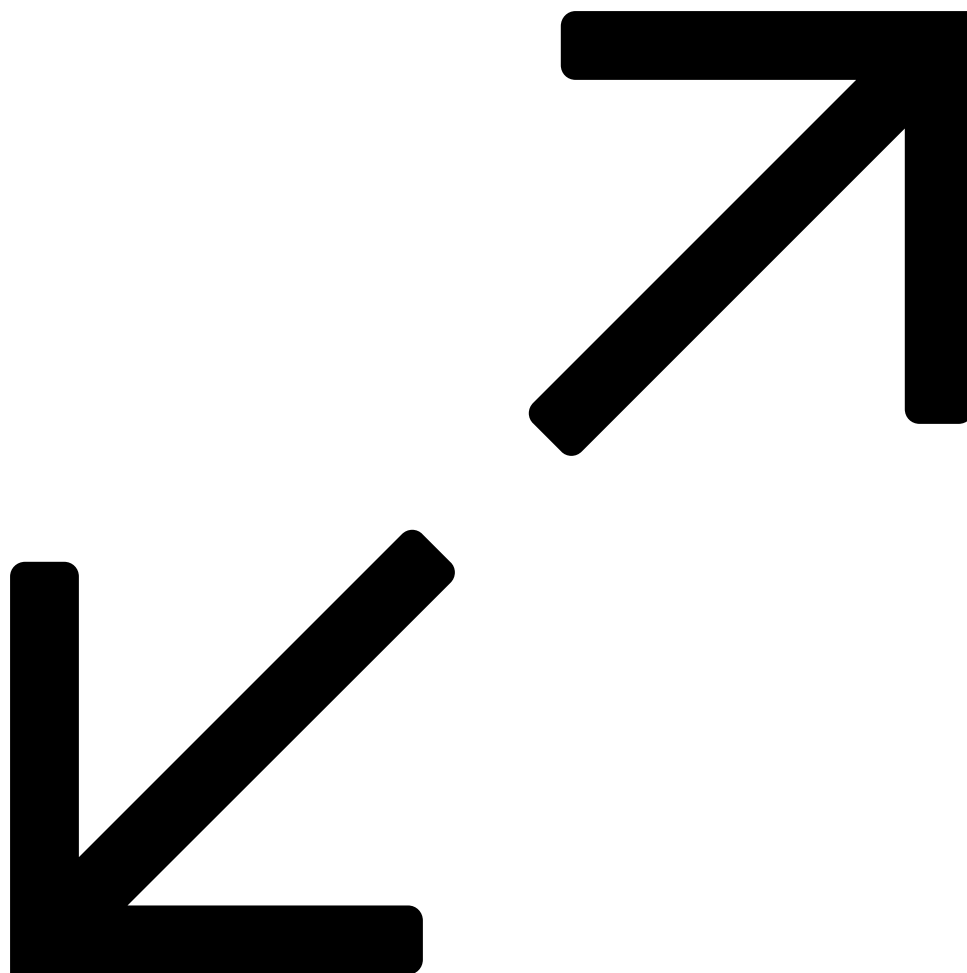
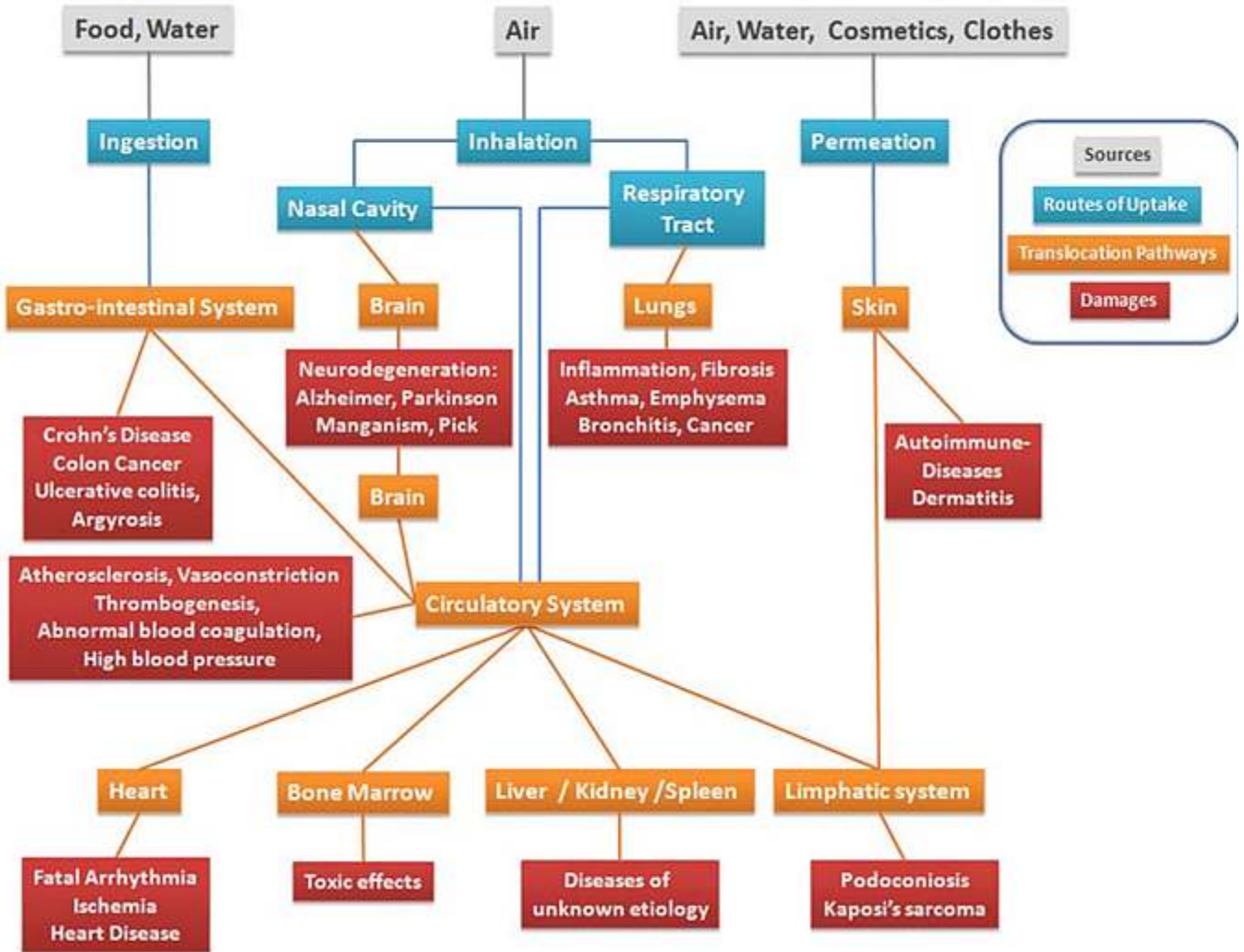
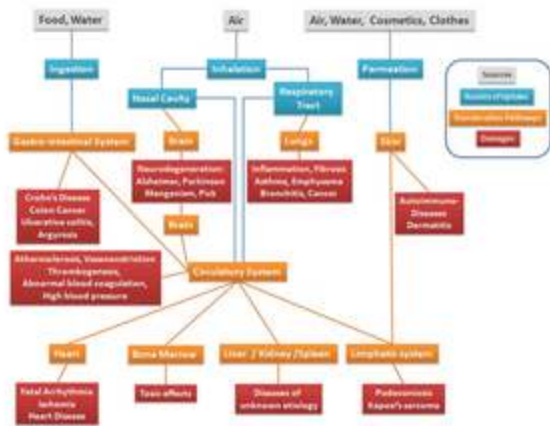


Figure 7: Showing cellular membrane breakdown and aging of the cell, known as the 'Corona Effect' due to acidic chemical and radiation poisoning from PM and EMF.[]

To learn more about the one sickness, one disease and one treatment read, Sick and Tired, The pH Miracle, The pH Miracle revised and updated, the pH Miracle for Weight Loss, The pH Miracle for Diabetes, The pH Miracle for Cancer and the soon to be released Thrive on Perfect Health.



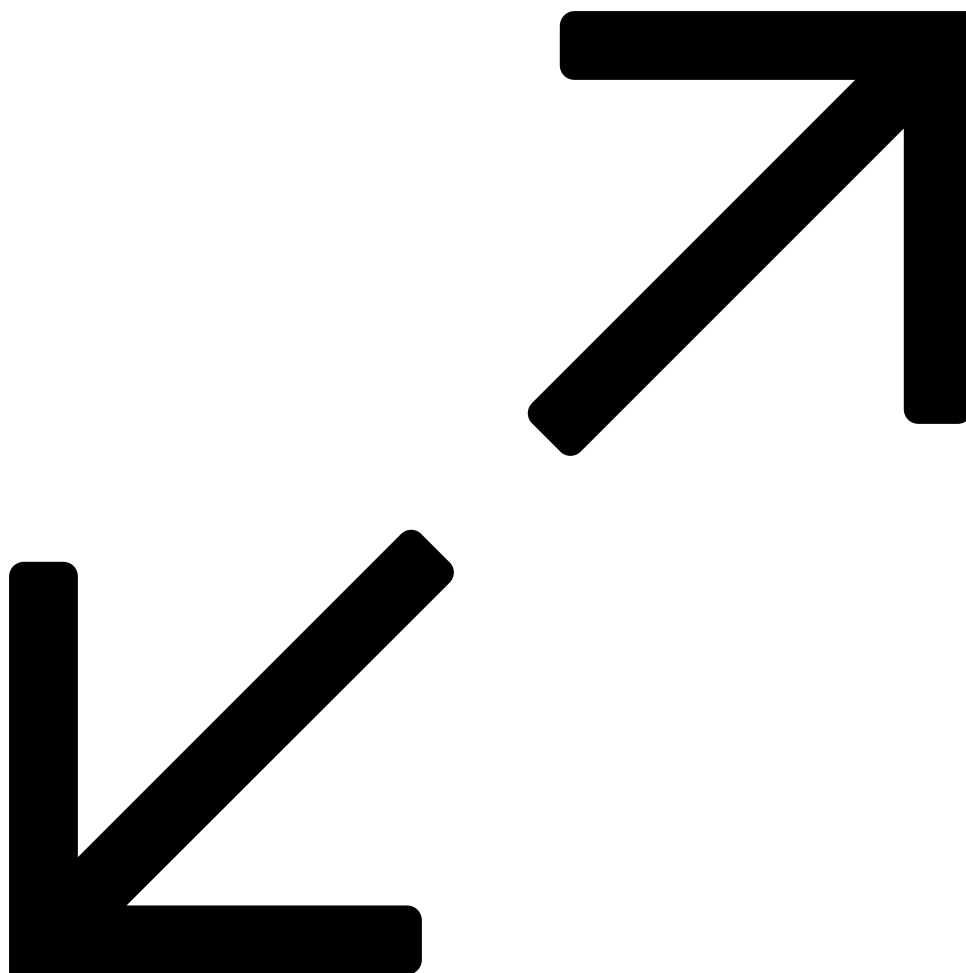
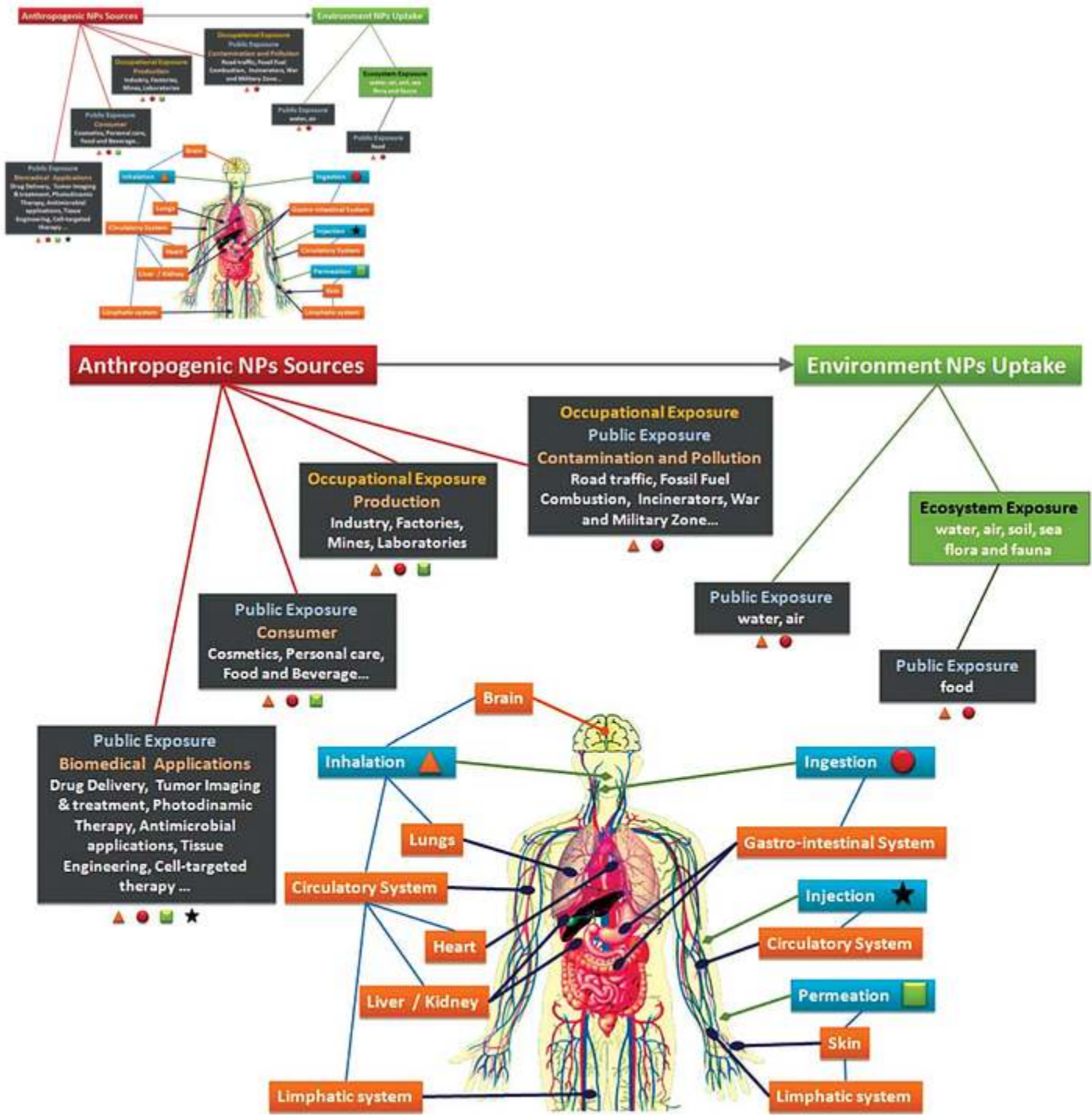


Figure 8: The predominant routes of NPs exposure, uptake, translocation and potential risks. The gray boxes indicate the source of NPs exposure, blue boxes indicate the primary routes of uptake, the orange boxes the potential translocation pathways and the red boxes the potential

damage.[1]



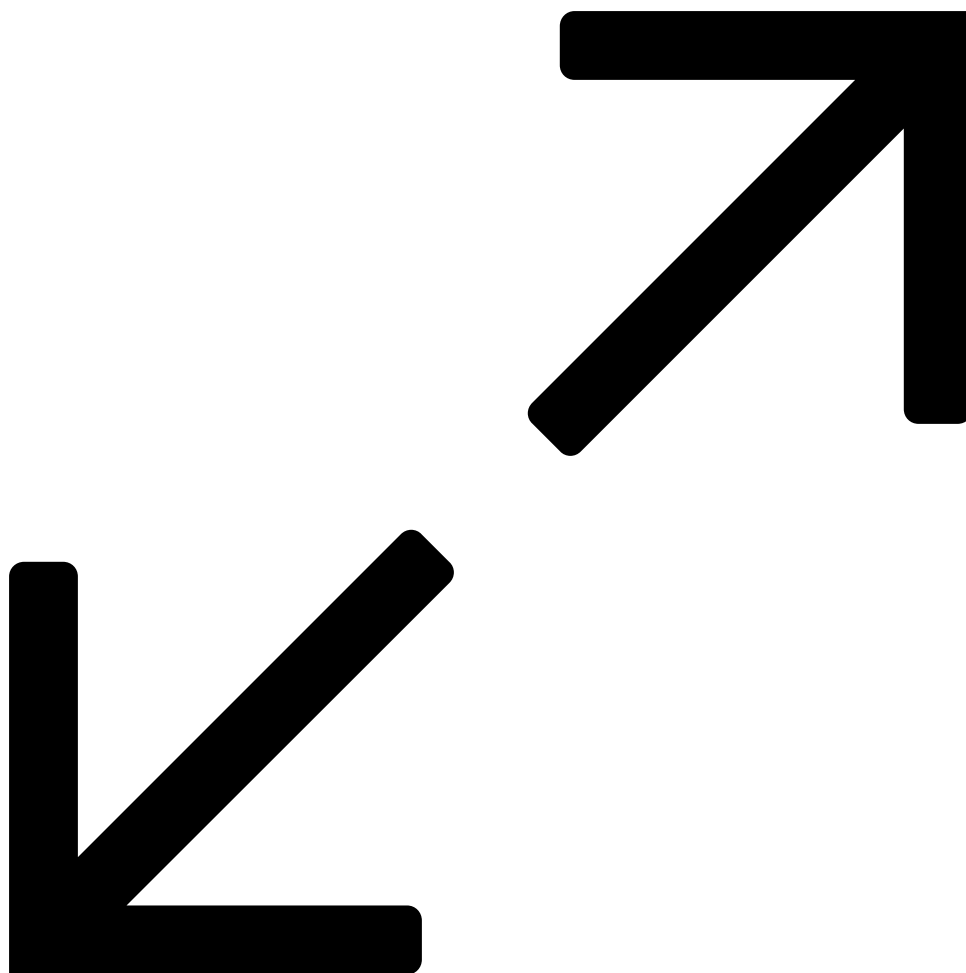
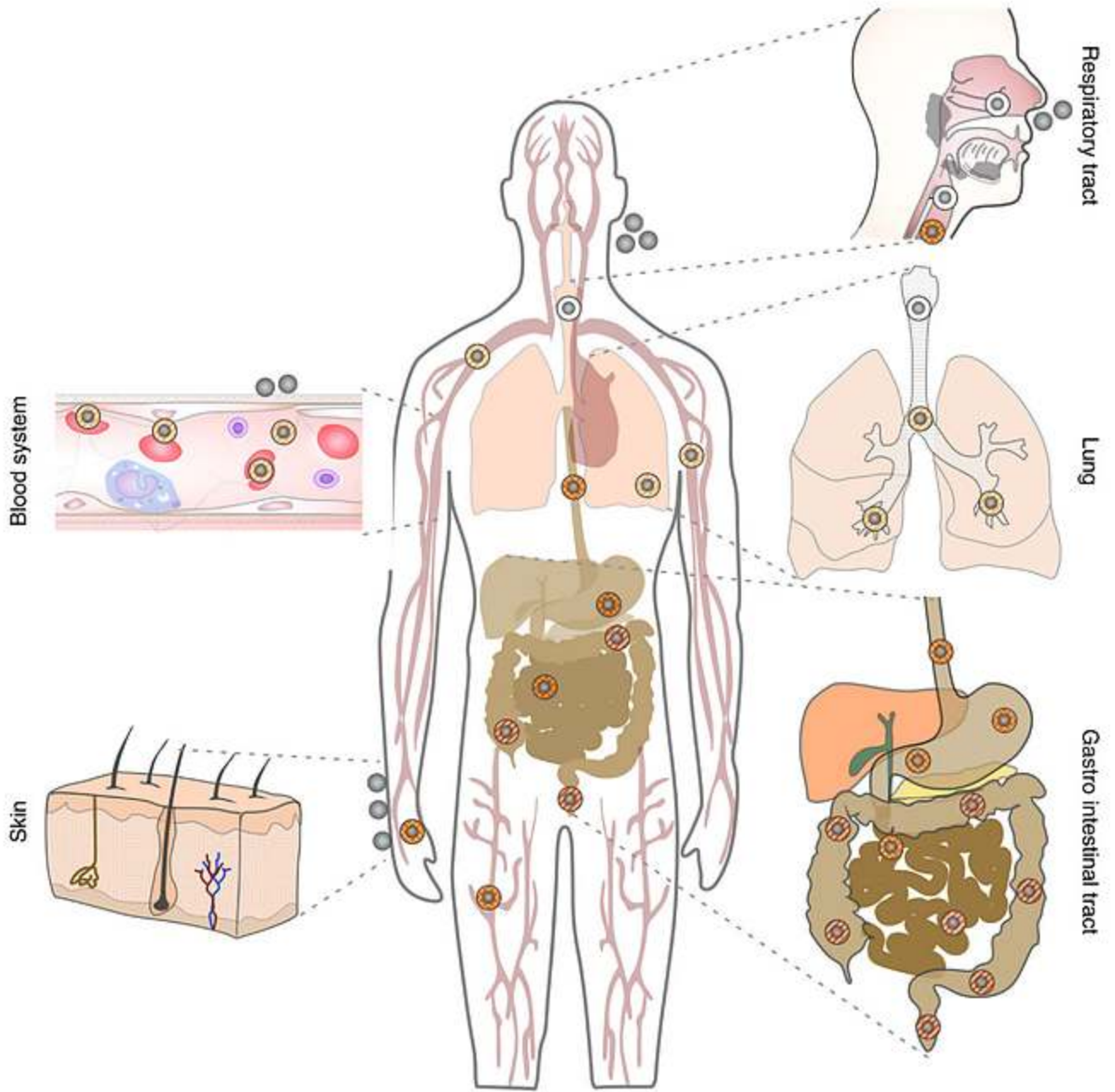
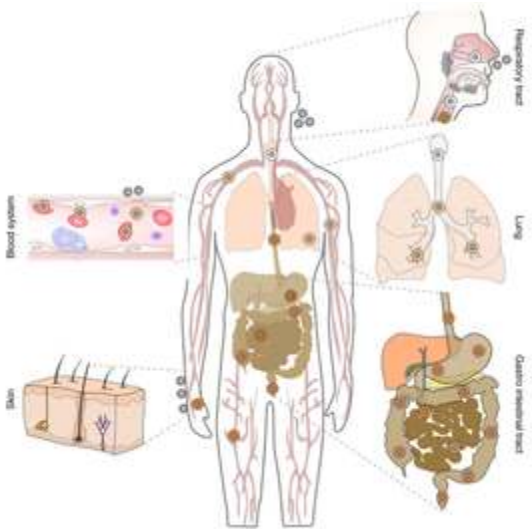


Figure 9: Possible entry routes for NPs. After accidental exposure or intended NP application, NPs enter the human body by intravenous injection or by oral, dermal, and pulmonic routes. Upon contact with physiological environments, biomolecules immediately absorb onto the NPs, forming the biomolecule-corona. Upon contact with other (micro)environments, the corona composition most likely changes, but still keeps a stable “fingerprint” from its initial entry site.[1]



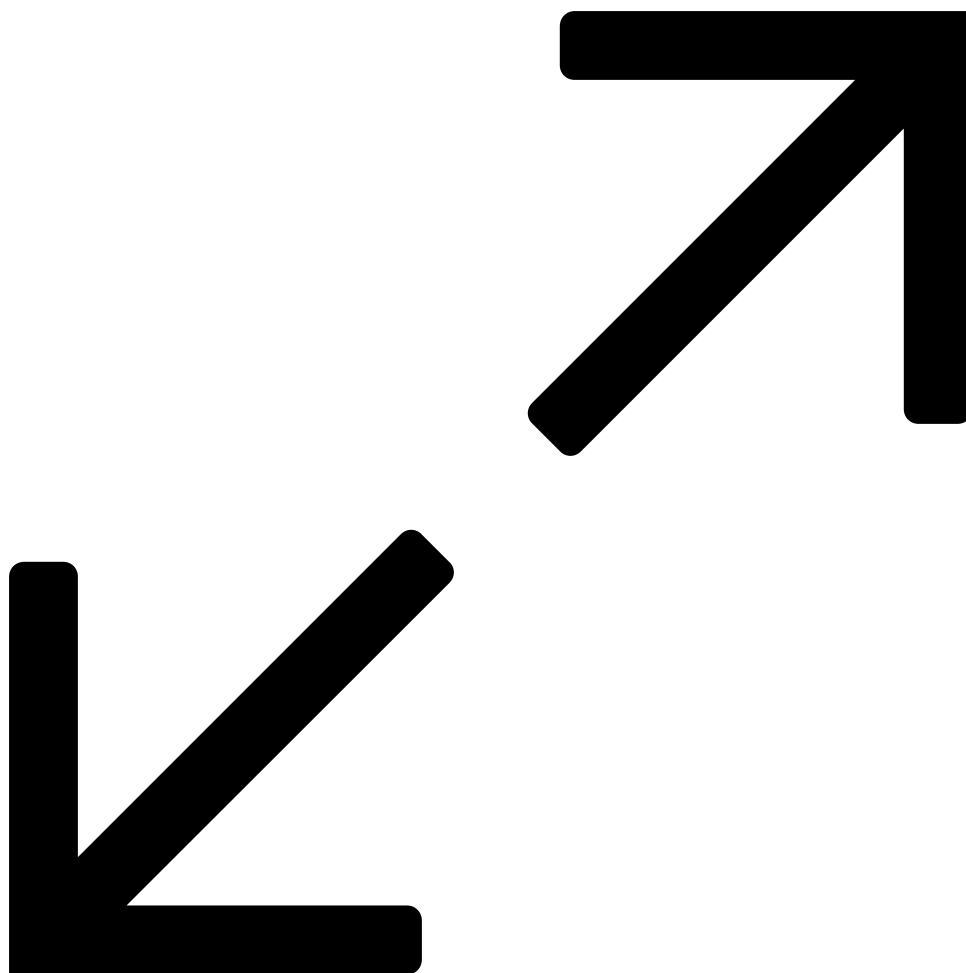
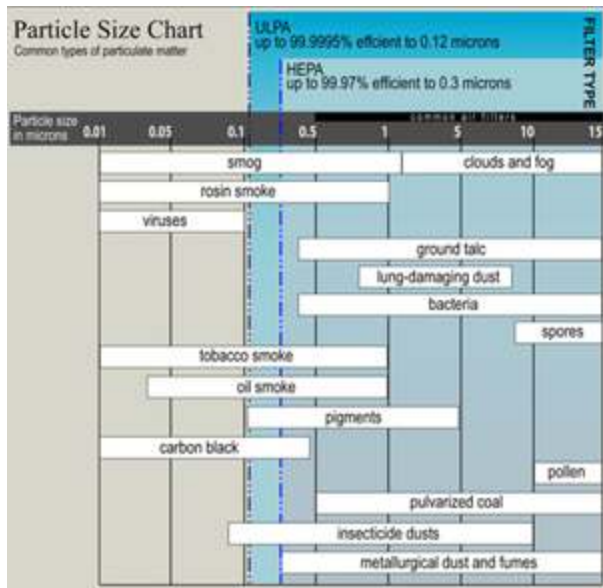
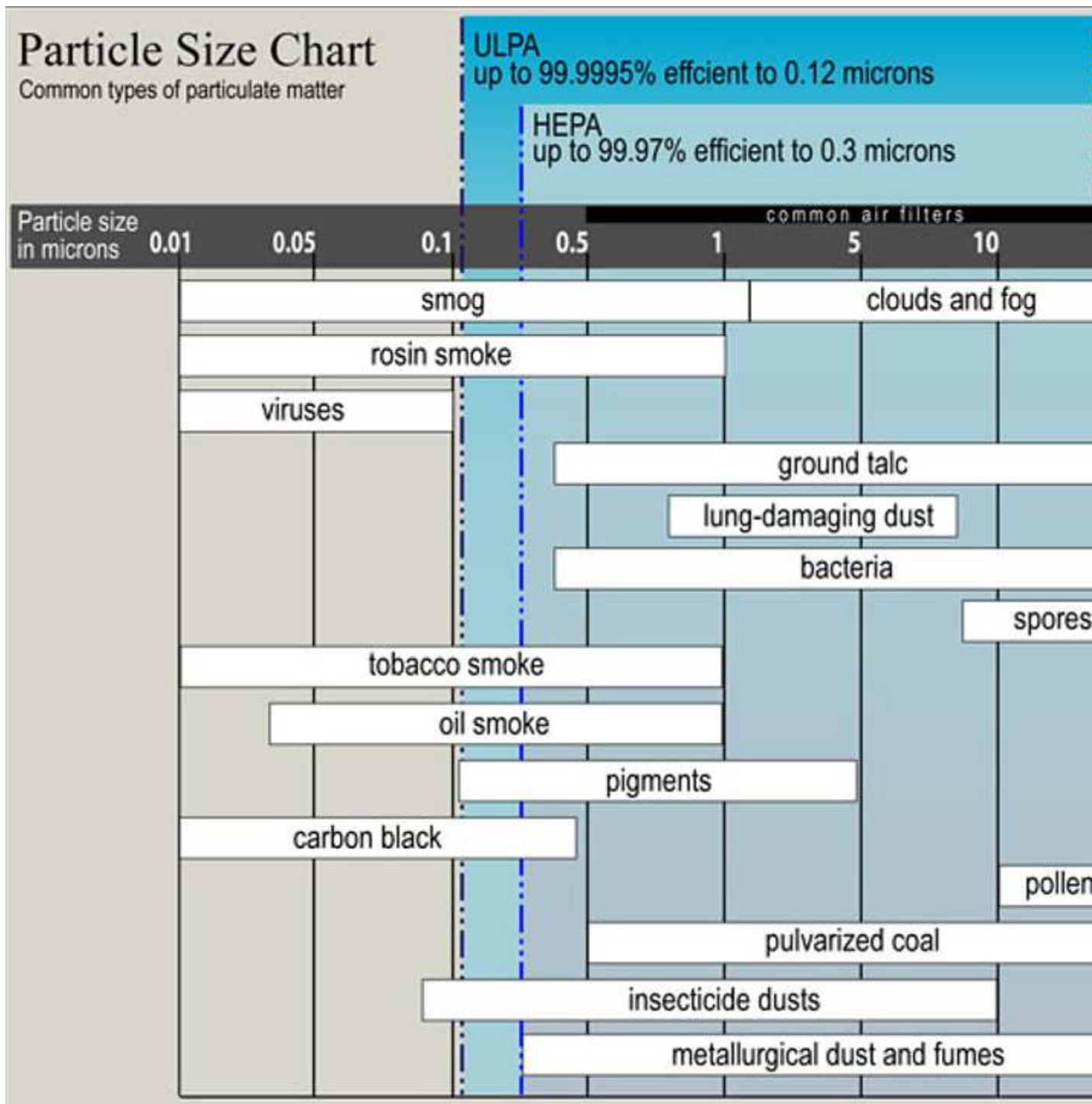


Figure 10: Human exposure to NPs. Main anthropogenic sources of NPs, their release in the work place and environment, the subsequent occupational or public exposure through several ways of entry and translocation into human body.

Now YOU Know the Sizes of PM Will Social Distancing or Wearing a Mask Provide Any So-Called Protection?

Now is the time for YOU to put on YOUR COMMON SENSE HAT!





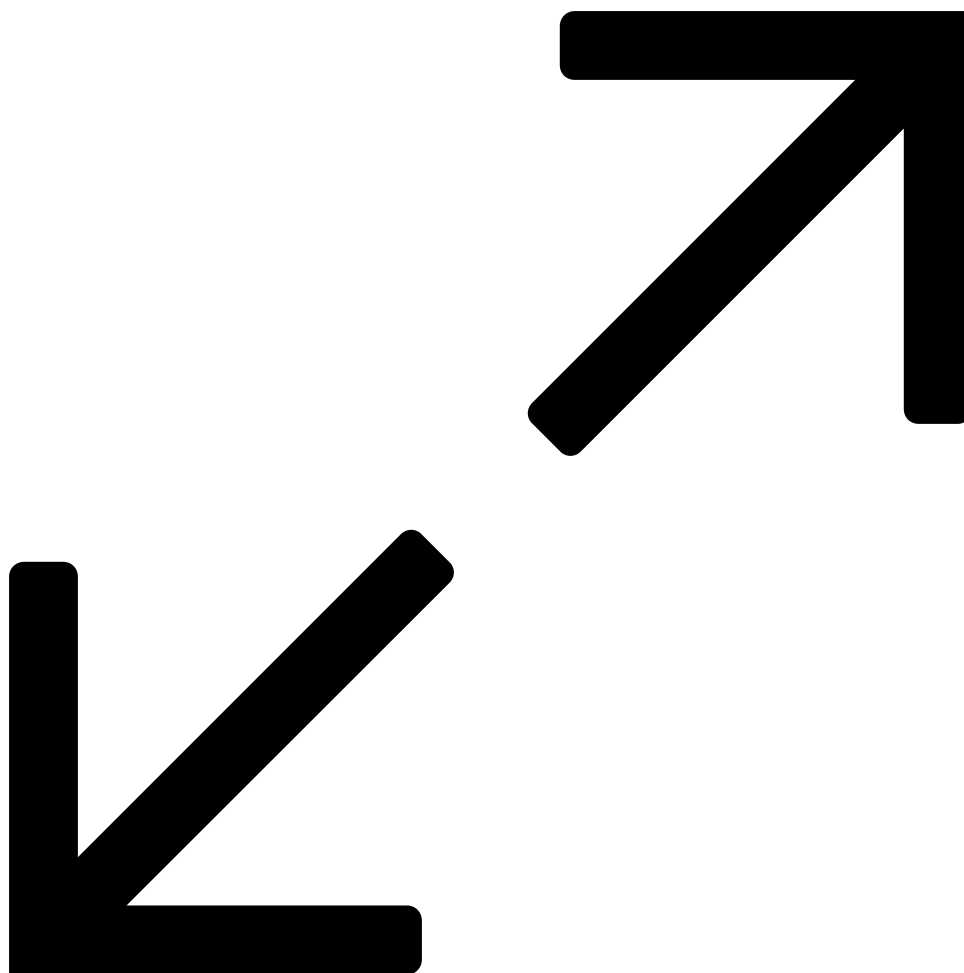


Figure 11: Particle size chart of PM the efficiency of wearing a mask for filtering PM. You will note that the sizes of the PM are smaller than the ULPA and the HEPA filters therefore providing no benefit.[]

The answer is a scientific NO! Wearing a NP95 or NP99 or HEPA or ULPA mask to protect yourself from PM or any so-called virus is useless. All you do is create increased amounts of carbon dioxide in the alveoli, interstitial fluids and blood causing hypoxia and pathological blood coagulation and an increased risk for hypercapnia and death.

References

[1] Zoroddul M.A., Medici S., Ledda A., Nurchi V.M., Lachowicz J. I. Peana M., "Toxicity of Nanoparticles." *Current Medicinal Chemistry*, 2014, 21, 3837-3853 3837.

[2] Young, R.O., "What Do Viruses Like HIV & Corona Have In Common With Exosomes?"
<https://www.drrobertyoung.com/post/lies-and-viruses-have-a-lot-in-common>