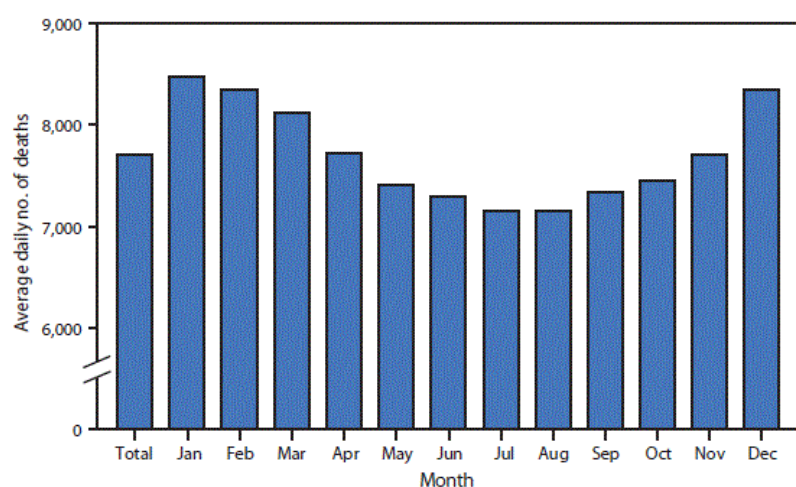


# Morbidity and Mortality Weekly Report (*MMWR*)

Weekly / July 5, 2019 / 68(26);593

[View suggested citation](#)



\* Deaths include U.S. residents only.

In 2017, an average of 7,708 deaths occurred each day. January, February, and December were the months with the highest average daily number of deaths (8,478, 8,351, and 8,344, respectively). June, July, and August were the months with the lowest average daily number of deaths (7,298, 7,157, and 7,158, respectively).

**Source:** National Vital Statistics System. Underlying cause of death data, 1999–2017.  
<https://wonder.cdc.gov/ucd-icd10.html>.

**Reported by:** Jiaquan Xu, MD, [jiaquanxu@cdc.gov](mailto:jiaquanxu@cdc.gov), 301-458-4086.

[Top](#)

[Top](#)

[Top](#)

## Article Metrics

### Altmetric:



Citations: 0

Views: 16,582

*Views equals page views plus PDF downloads*

[Metric Details](#)

## Related Materials

 [PDF]

**Suggested citation for this article:** *QuickStats: Average Daily Number of Deaths, by Month — United States, 2017.* *MMWR Morb Mortal Wkly Rep* 2019;68:593. DOI: <http://dx.doi.org/10.15585/mmwr.mm6826a5> [↗](#).

*MMWR* and *Morbidity and Mortality Weekly Report* are service marks of the U.S. Department of Health and Human Services.

Use of trade names and commercial sources is for identification only and does not imply endorsement by the U.S. Department of Health and Human Services.

References to non-CDC sites on the Internet are provided as a service to *MMWR* readers and do not constitute or imply endorsement of these organizations or their programs by CDC or the U.S. Department of Health and Human Services. CDC is not responsible for the content of pages found at these sites. URL addresses listed in *MMWR* were current as of the date of publication.

All HTML versions of *MMWR* articles are generated from final proofs through an automated process. This conversion might result in character translation or format errors in the HTML version. Users are referred to the electronic PDF version (<https://www.cdc.gov/mmwr>) and/or the original *MMWR* paper copy for printable versions of official text, figures, and tables.

Questions or messages regarding errors in formatting should be addressed to [mmwrq@cdc.gov](mailto:mmwrq@cdc.gov).

Page last reviewed: July 3, 2019